





iSWM™ Program for Construction and Development
IIC meeting
March 4, 2009



Today's Agenda



- 1. Discuss upcoming meetings**
- 2. Review presentation materials**
- 3. Discuss assistance from committee members**
- 4. Committee openings update**
- 5. Adjourn**





1. Discuss upcoming meetings



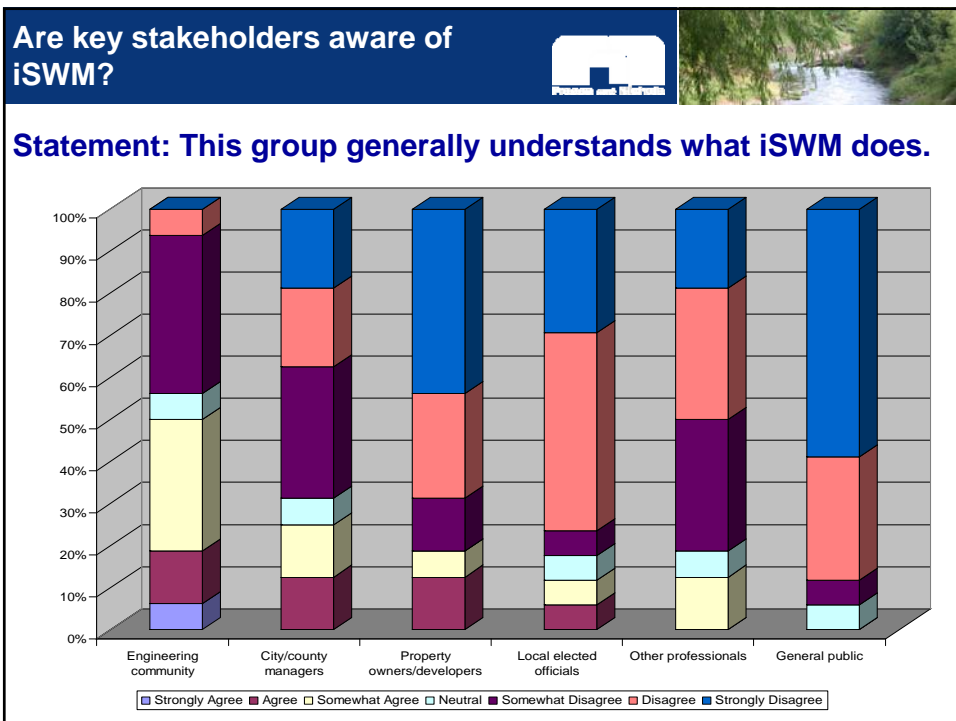
Public Meeting Objectives

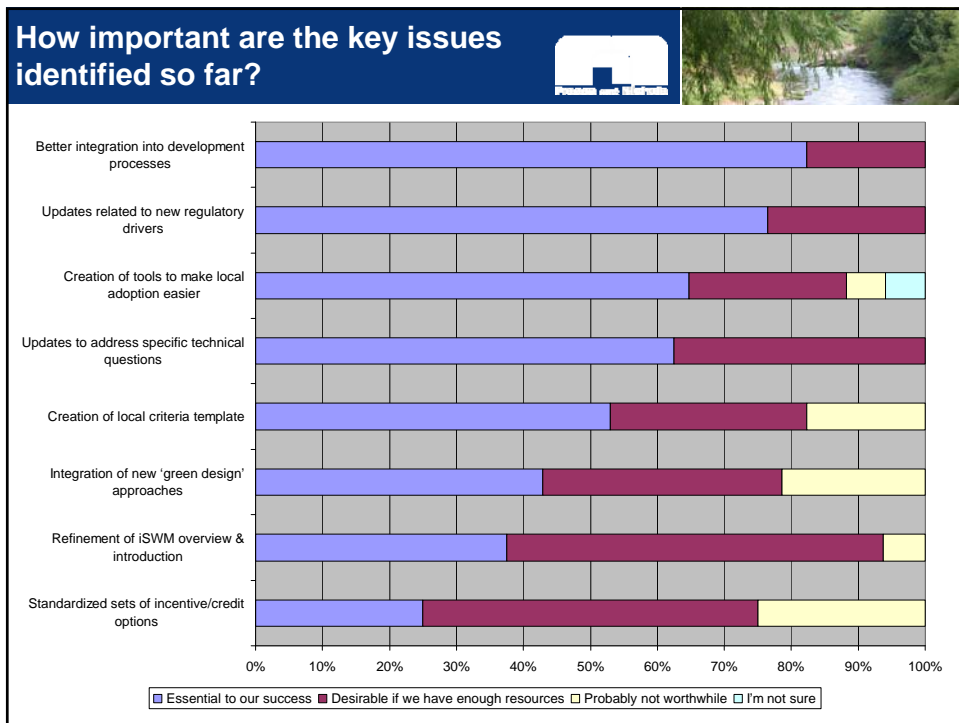
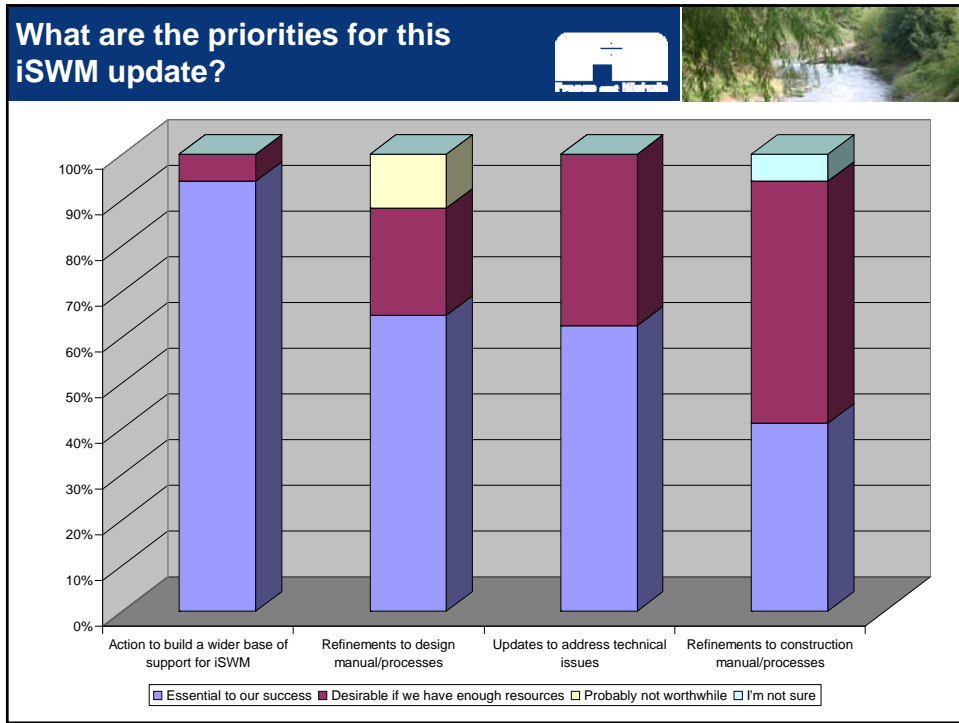
- **Share information**
 - What iSWM is, how it's been used and why an update is underway
 - The connection between iSWM and other community goals (like sustainability) and processes (such as the development approval process)
- **Gain input & insights**
 - From diverse public and private perspectives
 - On ways to improve the iSWM program
 - About strategies for greater awareness & use of iSWM

Committee's keypad results

- **Polling indicates the committee members' perceptions about iSWM and the priorities this update should address.**





Meeting Schedule	
<p>Thursday, March 12, 2009</p> <ul style="list-style-type: none"> ▪ 2-4 p.m. ▪ City of Richardson ▪ Richardson Room ▪ 411 West Arapaho ▪ Richardson, Texas 75080 	<p>Monday, March 16, 2009</p> <ul style="list-style-type: none"> ▪ 3-5 p.m. ▪ City of Cedar Hill ▪ Cedar Hill Recreation Center ▪ 310 East Parkerville ▪ Cedar Hill, Texas 75104
<p>Friday, March 13, 2009</p> <ul style="list-style-type: none"> ▪ 3-5 p.m. ▪ City of Colleyville ▪ Colleyville Center ▪ 5301 Riverwalk Drive ▪ Colleyville, Texas 76034 	<p>Wednesday, March 18, 2009</p> <ul style="list-style-type: none"> ▪ 3-5 p.m. ▪ UT Arlington Fort Worth Center ▪ 1401 Jones Street ▪ Fort Worth, Texas 76102

Outreach for Meetings
<ul style="list-style-type: none"> • InSight e-Newsletter <ul style="list-style-type: none"> • About 1,800 contacts • Cities, media, interested parties • Personalized emails <ul style="list-style-type: none"> • About 2,350 emails • Public & private sectors • Web posting (iswm.nctcog.org) • Organizations' communication tools

Public Meeting Agenda (2 hours)

- **Welcome & introductions (5 min.)**
- **Overview of iSWM (25 min.)**
 - Including informational questions from audience
- **Small group discussions (50 min.)**
 - Including instructions & time to go to/from groups
- **Reports to entire group (15 min.)**
 - And discussion by all participants
- **Keypad polling (20 min.)**
- **Next steps (5 min.)**

Small Group Focus Areas

- **Engineering, floodplain management, storm water infrastructure design**
- **Urban planning, community design, development & project construction**
- **Local government management & finance**
- **Natural resource management, environmental permitting, environmental assets**



2. Review presentation materials



Overview Presentation - iSWM

- **Major topics to address**
 - The basics of the existing iSWM process & manuals
 - Experience and lessons learned
 - The iSWM update process
- **Presentation must communicate to a diverse audience**
 - Background & expertise
 - Level of experience with iSWM

Overview Presentation - iSWM



- **The basics of the existing iSWM process & manuals**
 - What is iSWM?
 - How was it created?
 - What are its key provisions/elements?
 - Who is using it?

What is iSWM?



- **Integrated Storm Water Management**
- **Comprehensive guidelines for integrated storm water management throughout the planning, design, construction, operation and maintenance of storm water infrastructure**
- **Adopted by NCTCOG in January 2006**
- **Designed to be a REGIONAL GUIDE to developers on the control and management of storm water. LOCAL CRITERIA allows each city that adopts iSWM to customize it to their needs.**

How was iSWM created?



- **Based on manuals implemented nationwide**
- **Based on concepts from EPA and other national agencies**
- **Based on evaluation of current storm water practices from North Central Texas Cities**
- **Consultant Team = Local, Regional, National experts**
- **NCTCOG staff input**
- **Technical Review Committee (representatives from municipalities, government agencies) meeting monthly over a period of 3 years**
- **Public Input (COG website, comment forms, public meetings, formal review periods)**
- **Case Studies (Watershed & 6 Sites)**

What are the key provisions/elements of iSWM?



- **Applicable to land disturbing activity of 1 acre or more where the total impervious area is increased by more than 5% above the current land development conditions**
- **Addresses 3 design storm events (1-2, 5-25, and 100 yr)**
- **iSWM includes:**
 - Integrated Design Criteria
 - 6-step development process includes development of an iSWM Site Plan
 - Integrated Site Design Practices (ch 1.3)
 - Storm Water Controls (ch 5)
 - Updated H&H design data

Who is using iSWM?



- **Full program**
 - Fort Worth (no water quality)
 - Dallas (now in draft stage)
- **Portions of program**
 - Denton
 - Plano
 - Lancaster
 - Grand Prairie
- **Role in permit approvals**

Overview Presentation - iSWM



- **Experience and lessons learned**
 - How is it working?
 - Why is this update being done?
- **Role of iSWM in sustainability and other 'green' initiatives**
 - How can it help these objectives?
 - Where is the relationship to other development initiatives?



Key issues for iSWM update


Key issue areas



- 1. Local criteria template**
- 2. City implementation**
- 3. Development process**
- 4. Credit/incentive system**
- 5. Green design**
- 6. Introductory/overview material**
- 7. Regulatory drivers**
- 8. Technical issues**
- 9. Construction issues**



Small Group Discussions



Objectives for Small Groups

- **Discuss iSWM with others who share your professional responsibilities and/or areas of interest**
- **Provide input from your perspective so this iSWM update will benefit you**

Small Groups




- **Select the small group that best fits your interests:**
 1. Engineering, floodplain management, storm water infrastructure design
 2. Urban planning, community design, development & project construction
 3. Local government management & finance
 4. Natural resource management, environmental permitting, environmental assets
- **Sustainability is part of all discussions**

Instructions for Small Groups



1. **Select and join a small group**
2. **Introduce yourselves**
3. **Agree on a speaker (who will present your ideas to the entire group) and a recorder (who will write down your answers to the questions you'll be given)**
4. **Discuss each question, using the large flipcharts to capture everyone's ideas**
5. **Seek to reach agreement & indicate your consensus on the flipchart or your notepad**




Small Group Discussions

You have 35 minutes




Reports from Small Groups



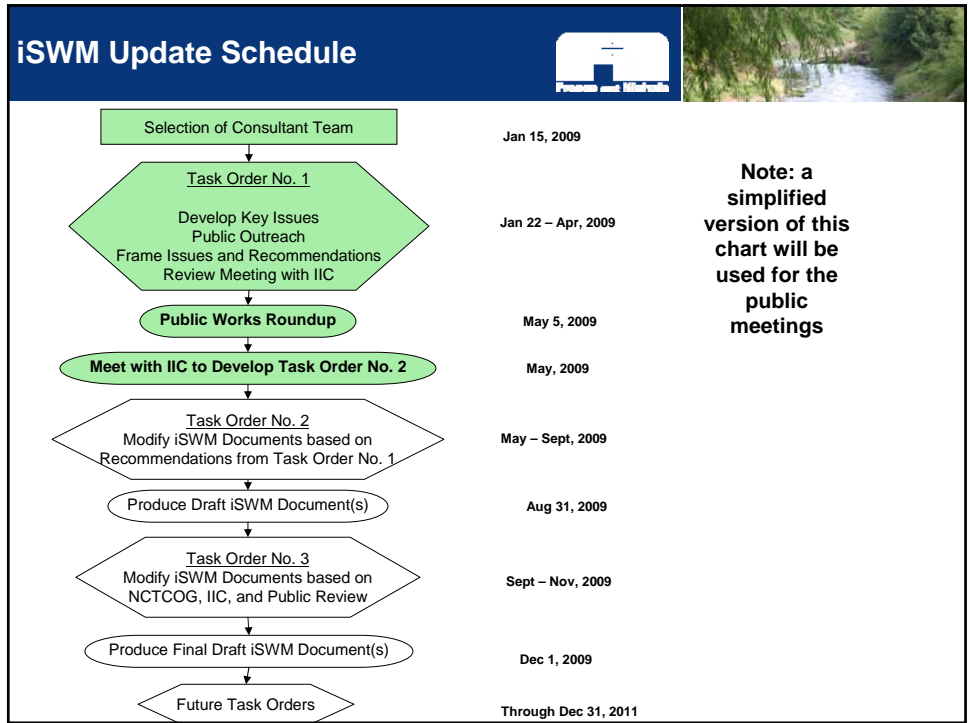
The header banner consists of a dark blue background on the left containing two logos: a white building icon and the text "Process and Materials". On the right side of the banner is a photograph of a river flowing through a lush green landscape.

Keypad Polling



The header banner consists of a dark blue background on the left containing two logos: a white building icon and the text "Process and Materials". On the right side of the banner is a photograph of a river flowing through a lush green landscape.

Next Steps



3. Discuss assistance from committee members

Committee Assistance

- **Before the meetings**
 - Encourage colleagues, elected officials & interested individuals to attend
 - Expand outreach through organizational e-newsletters & other techniques
- **At the meetings**
 - Ask clarification questions
 - Share expertise in engineering small group
 - 'Float' to answer questions in all groups

4. Committee openings update



5. Adjourn

The slide features a dark blue header banner at the top. On the left side of the banner is a white logo of a building with the text "Process and Methods" below it. On the right side of the banner is a photograph of a river flowing through a lush green landscape. The main body of the slide is white and contains the text "5. Adjourn" in a bold, dark blue font, centered horizontally.